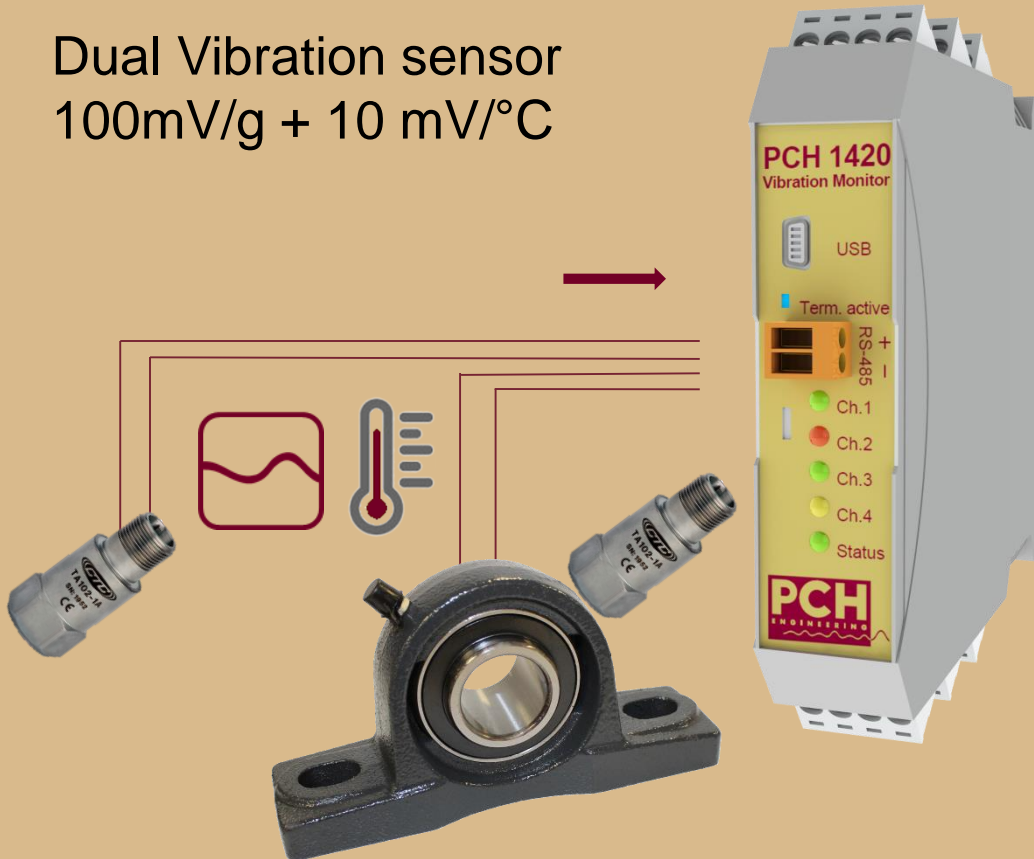


# PCH 1420 Vibration Monitor

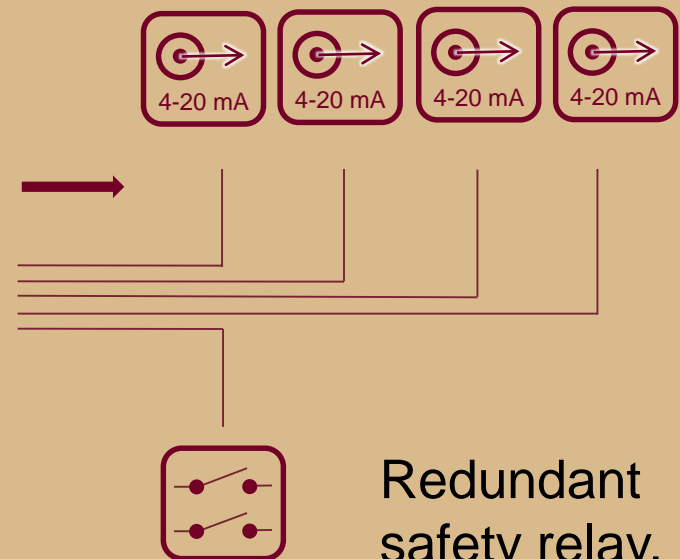
2 Input channels 100mV/g AC

2 Input channels 0-10V DC

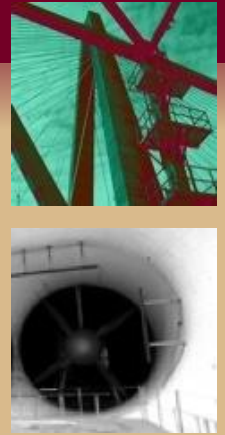
Dual Vibration sensor  
100mV/g + 10 mV/°C



2 Vib outputs, 2 Temp outputs



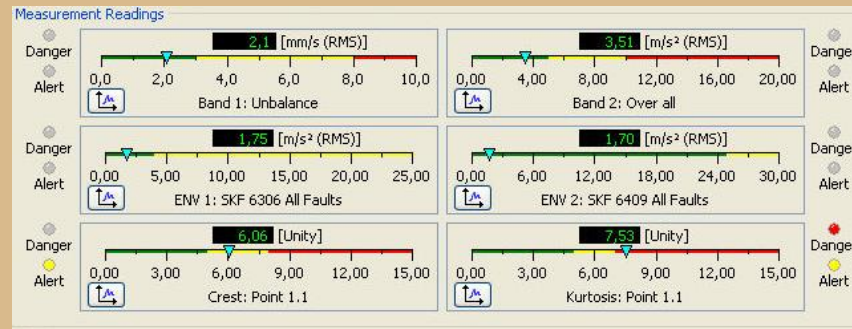
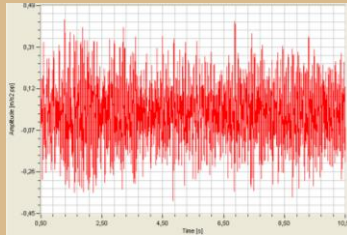
Redundant  
safety relay,  
ISO 13849



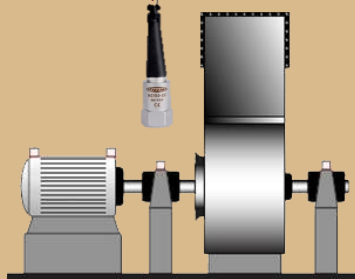
# PCH 1420 Vibration Monitor



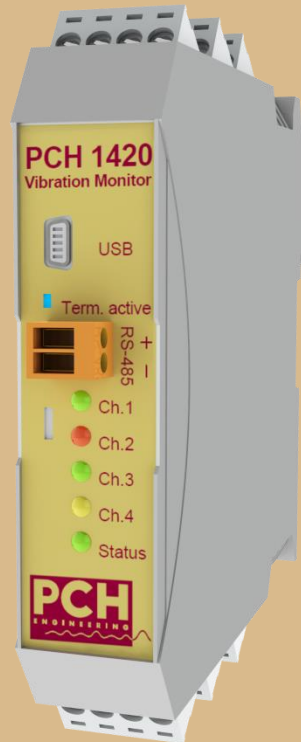
6 scalar values based upon time domain data from same sensor,  
Note: 100 ms response time API 670



Scalar values and alarms can be addressed freely to outputs



# PCH 1420 Vibration Monitor

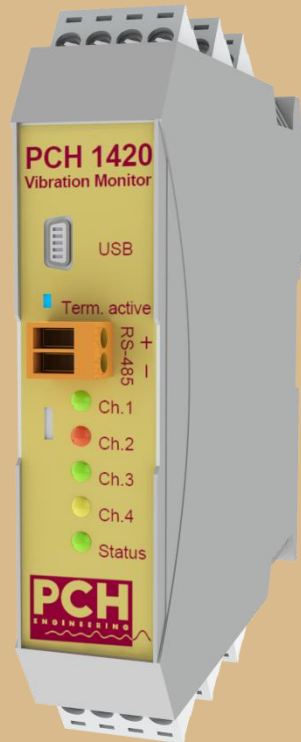


Each vibration measuring channel includes 2 configurable measuring bands:

## Band 1: General vibration measurements

Measuring range Vel + Displ.:	From 0.7 Hz to 1200 Hz
Measuring range Acceleration:	From 0.7 Hz to 10 kHz
Selectable detectors:	True RMS, Peak, Peak-Peak
Measuring parameters:	mm/s, m/s <sup>2</sup> , $\mu$ m, mm, mils

# PCH 1420 Vibration Monitor



Each vibration measuring channel includes 2 configurable measuring bands:

<u>Band 2: High frequency measurements</u>	
Measuring range Acceleration:	From 0.7 Hz to 10 kHz (over all)
Roller bearing fault detectors:	2 x Envelope 1-500 Hz, Crest and Kurtosis factor
Selectable detectors:	True RMS, Peak, Peak-Peak
Measuring parameters:	m/s <sup>2</sup> , g

Note: or configured as Band 1 without bearing detectors

# PCH 1420 Vibration Monitor



Alarm Setup for  
each scalar value

**Alert Alarm Setup**

Enabled: ☒

Is Low Limit: ☐

Alert Limit [mm/s]: 3,0

Alert Delay [s]: 10,00

Alert Latchable by HW: ☒

Alert Relay: Relay 1

**Danger Alarm Setup**

Enabled: ☒

Danger Limit [mm/s]: 8,0

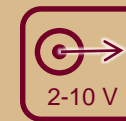
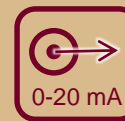
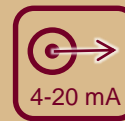
Danger Delay [s]: 5,00

Danger Latchable by HW: ☒

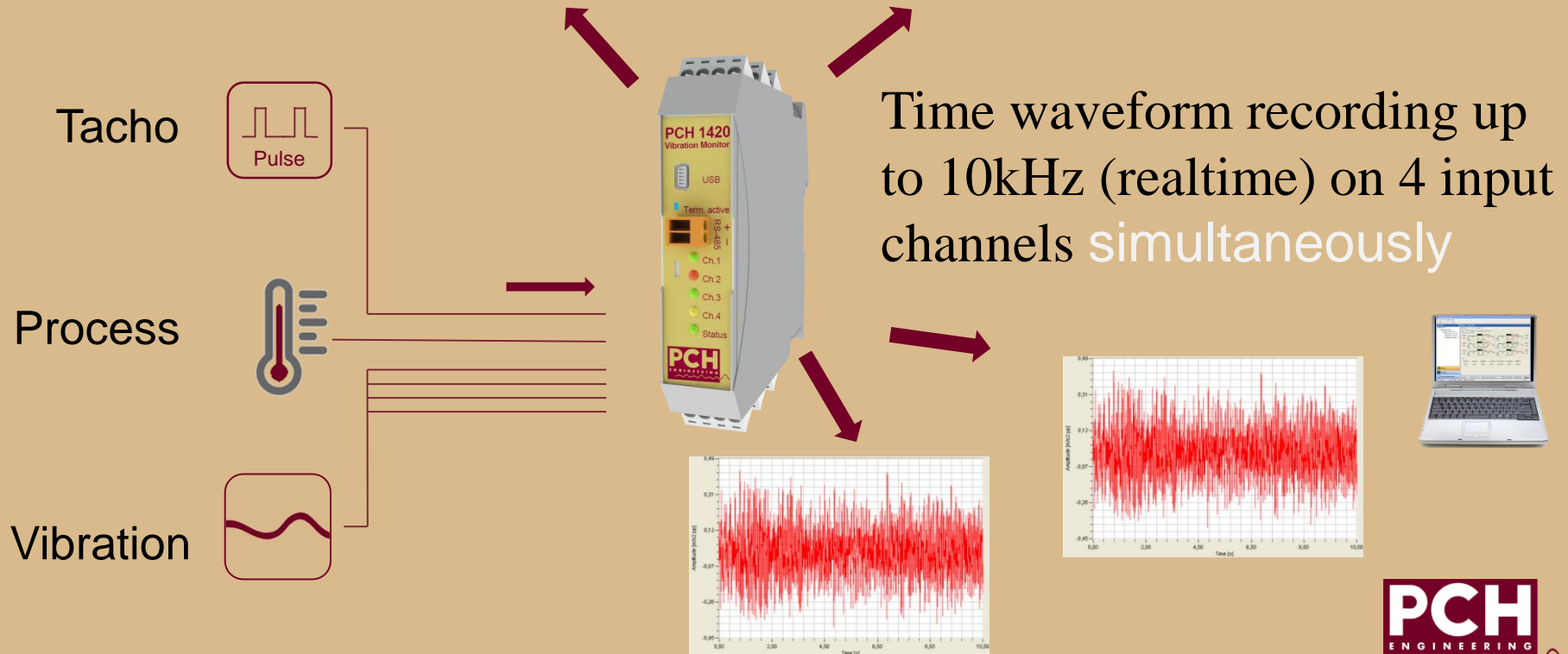
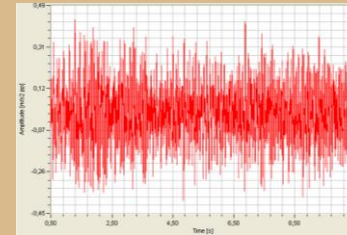
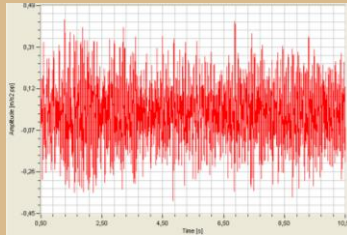
Danger Relay: Relay 2

## Configurable Outputs

	Parameter	Value
<input checked="" type="checkbox"/>	Output 1	Type: Relay
<input checked="" type="checkbox"/>	Output 2	Type: Relay
<input checked="" type="checkbox"/>	Output 3	Type: 4-20mA
<input checked="" type="checkbox"/>	Output 4	Type: 4-20mA

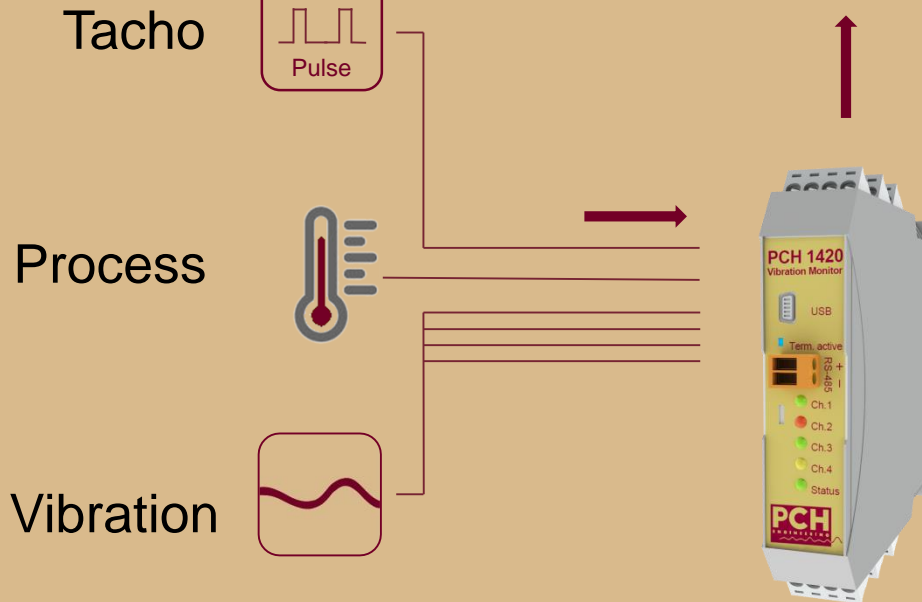
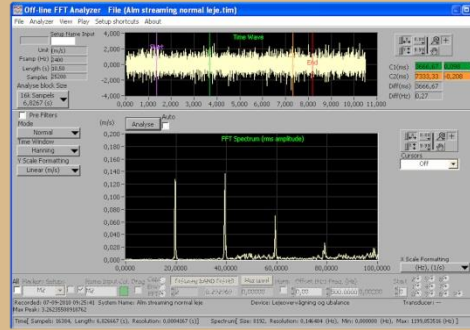


# PCH 1420 Vibration Monitor



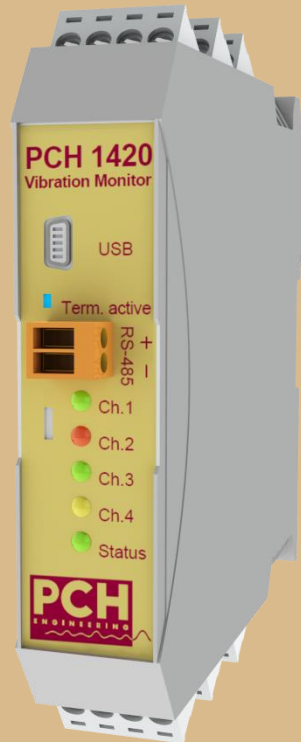


# PCH Vibration Studio<sup>®</sup>



- User software offers:
- Parameter setup and backup of monitors
  - Trending of several scalar values in the same chart
  - Data storage
  - Offline analysis of time recording

# PCH 1420 Link Concept



The new protection concept from PCH:

- Expansion modules can be connected to PCH 1420 with common power supply and bus communication





# PCH 1420 Link Concept



## PCH EtherBridge

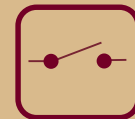
- LAN connection for several PCH monitors
- Modbus TCP / RTU
- OPC UA server
- Storage media for local data logging
- Remote access through 3G connection(option)

# PCH 1420 Link Concept



## PCH Relay Box

- 12 Relays (30V/100mA)
- Galvanic isolated
- Configurable through PCH 1420 PC interface
- Connected by DIN rail bus
- Failsafe (NO as non-energized)



# PCH 1420 Link Concept



IP 67 casings available

- EMC glands in aluminium or polycarbonate housing
- Fibox 200/175 XT(outer dimensions 255x180x175)
- PCH W25 casing

24V DC power supply for DIN rail available