

SDT340



Brochure



Manual



Datasheet

SDT270



Brochure



Manual



Datasheet

SDT270 Tank Test



Brochure



Manual



Datasheet

SDT270 Sherlog



Brochure



Manual



Datasheet

SDT200



Brochure



Manual



Datasheet

LUBExpert



Brochure



Manual



Datasheet

The Checker Range

LEAKChecker



Brochure



Datasheet

Manual



LUBEChecker



Brochure



Datasheet

Manual



TIGHTChecker



Brochure



Datasheet

Manual



TRAPChecker



Brochure



Datasheet

Manual



HATCHecker



Brochure



Datasheet

Manual



ULTRAChecker



Brochure



Datasheet

Manual



VIGILANT



Brochure



Manual



SONAVU



Brochure



Manual



Datasheet

RAPsodyBox



Brochure



Manual



Datasheet

COMMONSense



Brochure



Datasheets

0-10V

Airborne

Airborne Open

Contact

4-20mA

Airborne

Airborne Open

Contact

Configuration Interface

Heat Sink

T-SONIC1



Brochure



Manual



Datasheet

T-SONIC9



Manual



Datasheet

EDS2



[Datasheet](#)

FLEX



[Datasheet](#)

LUBESense1



[Datasheet](#)

ParaDish2



[Datasheet](#)

RS1N + ATEX



[Datasheet](#)

RS1T + ATEX



[Datasheet](#)

RS2N



[Datasheet](#)

RS2T



[Datasheet](#)

ULTRASense



[Datasheet](#)

AIRSense



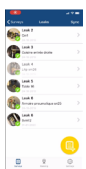
[Datasheet](#)

Remote Monitoring Box



[Datasheet](#)

LEAKReporter



Brochure



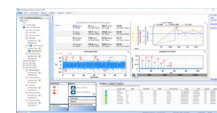
SHERLOGReporter



Brochure



Ultranalysis® Suite 3



Manual



Certifications

[ATEX](#)

[ISO9001](#)

Sherlog:

[Lloyd's Register Type Approval Certificate](#)

[Hellenic Register of Shipping Type Approval Certificate](#)

[DNV Type Approval Certificate](#)

[ABS Sherlog170 Manufacturing Assessment Certificate](#)